



Building with conscience.

StoCast Wood

Resin cast wood grain planks

Facades



Interiors



StoCast Wood are lightweight, flexible, resin cast, wood grain planks that create an authentic wood appearance. They are easy to apply and can be stained in a multitude of colors. More cost effective than real or engineered wood, StoCast Wood can be used in a variety of engineered wall cladding systems.





StoCast Wood

Authentic wood grain appearance

A durable and cost-effective alternative to real or engineered wood cladding.

Authentic wood grain appearance.

StoCast Wood comes in 45 different patterns to reduce the occurrence of replication. The planks are 6"W x 6'L and can be easily cut to fit the wall design. StoColor® Wood Stain offers a wide range of colors in glossy or matte finish to achieve a variety of different wood aesthetics. The results are astonishing, even up close and, if desired, can easily ensure color uniformity, avoiding the gradient color issues related to wood. StoCast Wood can also be finished with any Sto exterior coatings.

Durable and low-maintenance facades that stay pristine for longer.

Unlike real wood, StoCast Wood will not warp, chip, or rot, and is resistant to pests. Maintenance and recoating is minimal; StoCast Wood coated with StoColor® Wood Stain will last for years to come.

Easily installed, requires no nails or additional structural work.

The planks are lightweight and can easily be cut to size with a utility knife, unlike real wood, engineered wood or fiber cement panels. StoCast Wood does not require any elaborate sub-construction or complicated detail connections and is easily combined with other Sto finishes.

Ideal for prefabrication and fast construction schedules.

StoCast Wood is simple to install with minimal training, adheres quickly and securely and is an ideal solution for panelizers looking for high performing products with a fast install time.

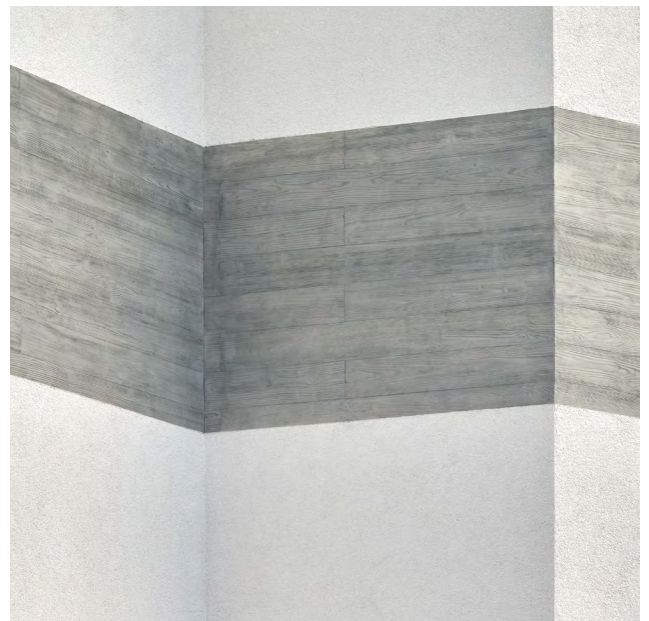
Air, vapor, water and thermal control layers.

When used with Sto's fully engineered wall cladding systems, designers can enjoy a wood-like cladding that features a high-performance liquid-applied continuous air and moisture barrier and continuous insulation such as EPS, XPS or GPS. StoCast Wood can be used with many of Sto's EIFS, stucco, cement board or rainscreen systems.



Greater design flexibility with no compatibility or continuity issues.

The decision to clad the facade with StoCast Wood can be made at short notice, as the system build-up of the external wall system remains unchanged up to the base coat. StoCast Wood can be applied as the finish layer to any Sto cladding system, or directly applied to most common construction surfaces such as CMU, drywall or OSB. There is a lot of scope for design—from the creation of specific accentuated areas to full-surface use for the authentic appearance of a wooden house. Combine the look of wood, with brick, stone, metal or traditional plaster using the same Sto system, and enjoy a one source warranty: fully engineered systems will cover your wall from the sheathing out.





Standard Colors

Grey
38101

■ 44



Light Oak
38103

■ 25



Ash
38111

■ 39



Pine
38113

■ 40



Walnut
38140

■ 18



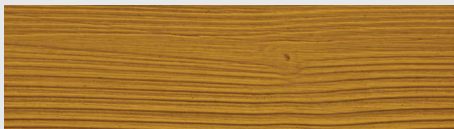
Old Pine
38144

■ 28



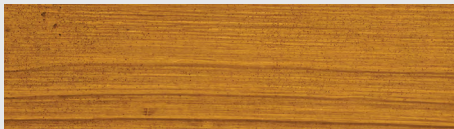
Oak
38146

■ 24



Teak
38147

■ 17



White
38151

■ 77



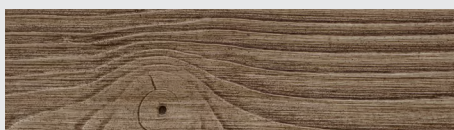
Beech
VT192294

■ 38



Ironwood
VT192392

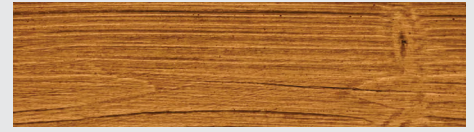
■ 30



Alder

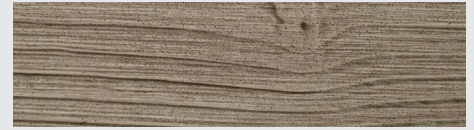
VT192393

■ 26



Butternut
VT192390

■ 49



Charred

VT206772

■ 4



Willow

VT207029

■ 44



Product advantages

- Authentic wood grain appearance with a variety of unique patterns
- For interior/exterior application
- Flexible: can be applied to curved surfaces
- More cost effective and durable than real wood
- Easy to maintain
- Lightweight material
- Fast and easy to apply, no mechanical fastener needed
- Can be stained in a variety of colors, matte or glossy
- Resistant to pests
- Will not rot
- Ideal for soffits due to simple installation

Note:

StoCast Wood can be stained in various colors with StoColor Wood Stain. Fifteen standard colors are available, but more colors can be achieved by contacting your local Sto representative. Light reflectance value: StoColor System; LRV ≥ 20 for StoTherm® ci systems with EPS, XPS or GPS insulation. The minimum permissible light reflectance value depends on the substrate, the system and the product.

The colors presented on this chart are representations. Actual color of manufactured product may vary slightly from the chart. Color perception is affected by degree of gloss, texture and lighting conditions. For best results, always request a product sample, select color under natural lighting conditions and construct full scale job site mock-ups for final color approval. Minor shade variations may occur from batch to batch (refer to batch no. on pail). Avoid installing separate batches side-by-side and avoid application in direct sunlight. Avoid installing new finish adjacent to weathered or aged finish. Sto Corp. will not be responsible for shade or color variation from batch to batch, variation caused by application or substrate deficiencies or fading resulting from natural causes such as weather.

■ 00 LIGHT REFLECTIVE VALUE (LRV)

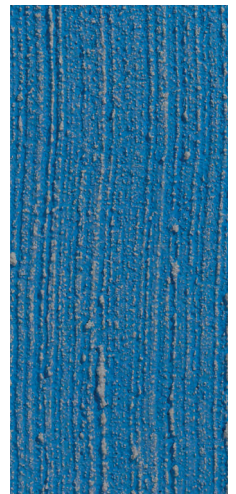
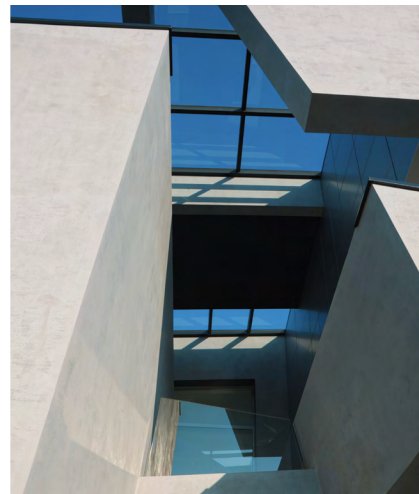
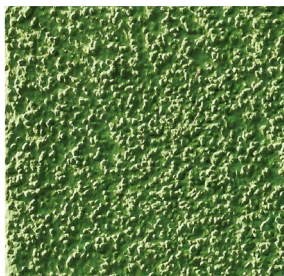
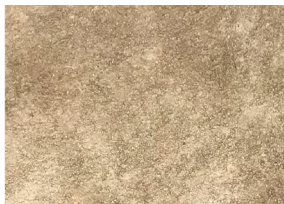
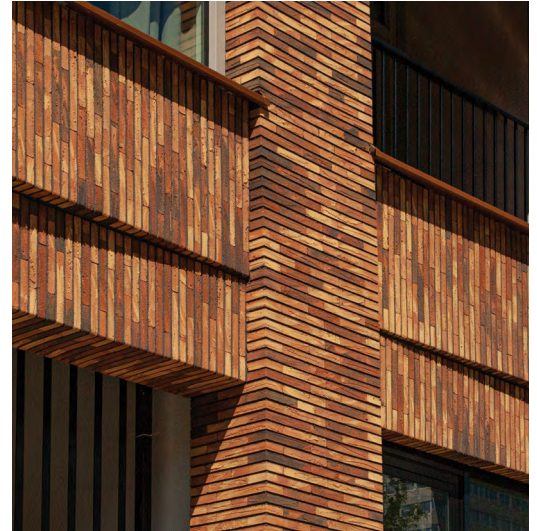


Inspiration favors the open mind

With Sto, your creative exploration can take you anywhere. Our proven products give you unmatched freedom and the ability to achieve your vision in any color, any form, any texture, any material.

StoCast Wood joins a wide range of aesthetic options provided by Sto. Designers are asking for design freedom, but with the assurance that the entire building envelope will perform. By offering this new, outstanding wall cladding, architects have one more alternative to choose from; they can achieve a multitude of looks while enjoying the continuity and compatibility of the wall cladding throughout the entire building, no matter the aesthetic chosen.

Creativity Begins. **Sto Finishes.**®



Sto Americas

Sto Corp.
3800 Camp Creek Pkwy
Building 1400, Suite 120
Atlanta, GA 30331
USA

Phone 1-800-221-2397
www.stocorp.com

ATTENTION

Sto products are intended for use by qualified professional contractors, not consumers, as a component of a larger construction assembly as specified by a qualified design professional, general contractor or builder. They should be installed in accordance with those specifications and Sto's instructions. Sto Corp. disclaims all, and assumes no, liability for on-site inspections, for its products applied improperly, or by unqualified persons or entities, or as part of an improperly designed or constructed building, for the nonperformance of adjacent building components or assemblies, or for other construction activities beyond Sto's control. Improper use of Sto products or use as part of an improperly designed or constructed larger assembly or building may result in serious damage to this product, and to the structure of the building or its components. **STO CORP. DISCLAIMS ALL WARRANTIES EXPRESSED OR IMPLIED EXCEPT FOR EXPLICIT LIMITED WRITTEN WARRANTIES ISSUED TO AND ACCEPTED BY BUILDING OWNERS IN ACCORDANCE WITH STO'S WARRANTY PROGRAMS WHICH ARE SUBJECT TO CHANGE FROM TIME TO TIME.** For the fullest, most current information on proper application, clean-up, mixing and other specifications and warranties, cautions and disclaimers, please refer to the Sto Corp. website, www.stocorp.com.